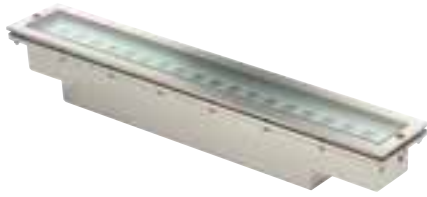




## RECESSED SPOTLIGHT 4.3060

EXTERIOR

IP67



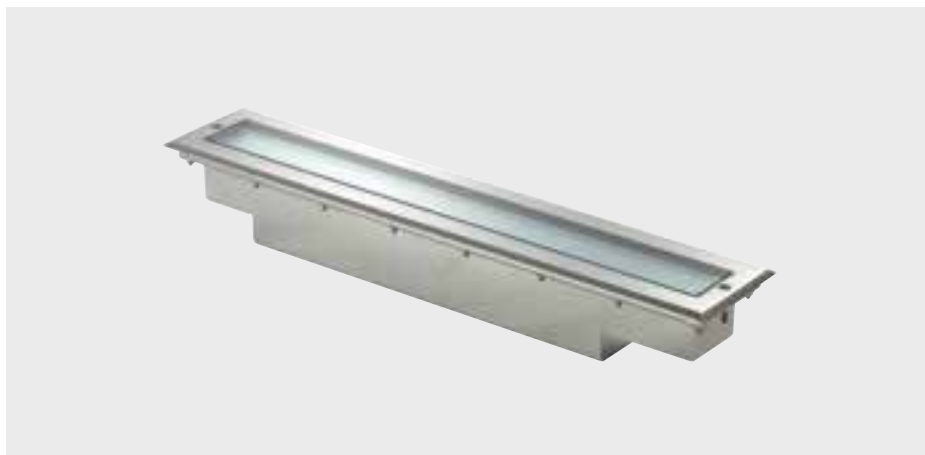
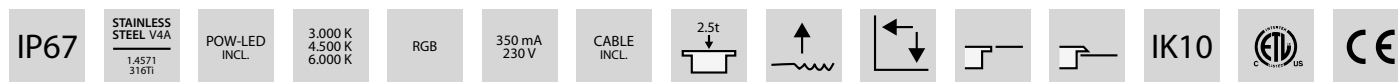
- › Effective linear illumination
- › Up to 2520 lumen light intensity
- › LED unit can be swivelled





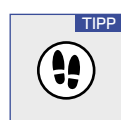
# 4.3060 | RECESSED LINEAR SPOTLIGHT

FOR LINEAR ILLUMINATION OF BUILDINGS, FACADES AND PUBLIC AREAS.



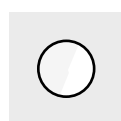
- Protection system IP67
- Entirely made of stainless steel 316Ti 1.4571
- Flush-mounted or rectangular cover, height 5 mm
- ...
- POW-LED cold white, warm white, neutral white, 230 V
- SMD-LED cold white, warm white, neutral white, 230 V
- POW-LED RGB 350 mA
- operating mode: constant current
- T16
- Linear light distribution
- symmetrical/asymmetrical T16
- +/- 15° adjustable POW-LED
- SMD-LED with diffus glass as an orientation lamp
- POW-LED-Platine temperatur control (NTC)
- ...
- Installation housing available as an option, with option for linear connection to an expansion housing (only in conjunction with a flush-mounted cover)
- Supplied with light source, 3 m of underwater cable and connection box

## + ADDITIONAL PARTS



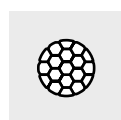
TIPP Anti-skid coating

4.3060.02.00



glass disc, frosted for softer light distribution (light loss approx. -15%)

4.3060.03.00



anti-glare louver

4.0003.30.60

## ★ PRODUCT LINE



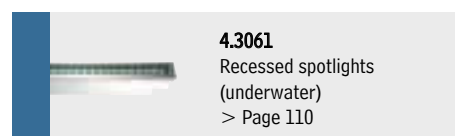
**4.3030**  
Recessed spotlights (exterior)  
> Page 202



**4.3090**  
Recessed spotlights (exterior)  
> Page 210



**4.3012**  
Recessed spotlights (exterior)  
> Page 214



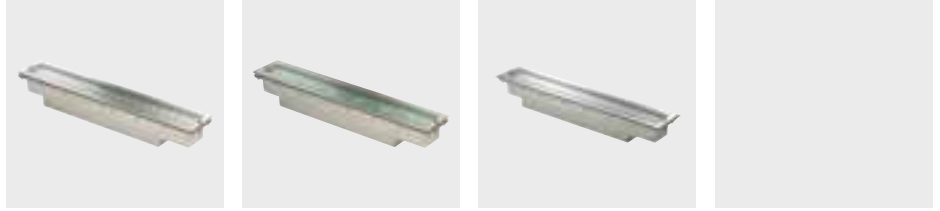
**4.3061**  
Recessed spotlights (underwater)  
> Page 110



# RECESSED SPOTLIGHT 4.3060

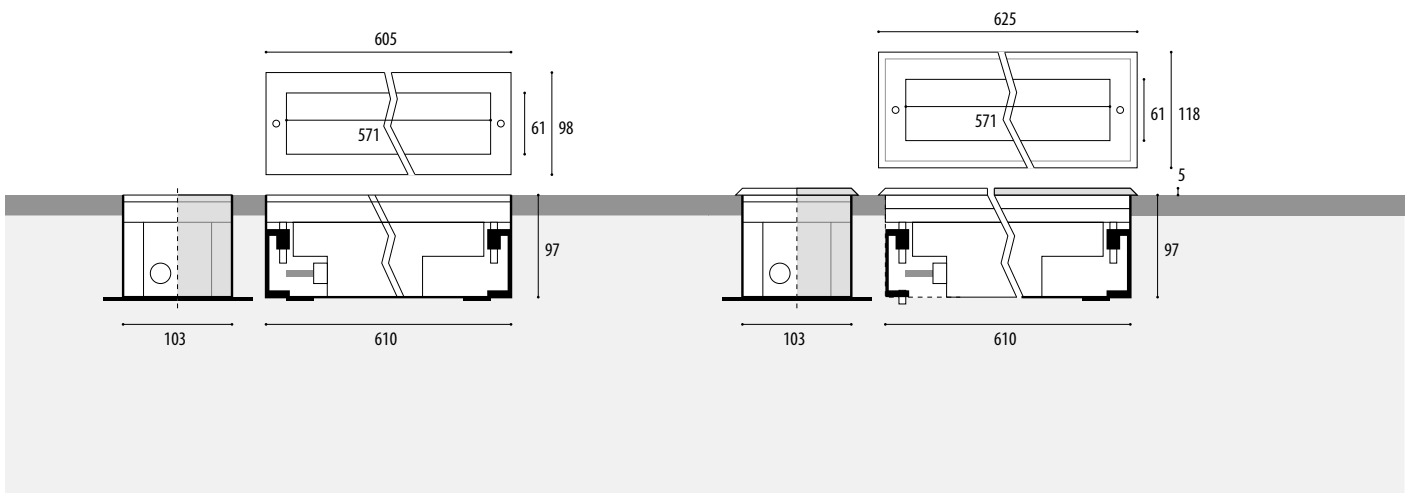
EXTERIOR

IP67



F

S



F	S	Article number	Article number	Lamps	Lumen	Light colour	Wattage	Current/Voltage	Radiation angle	Temperature	Cable, installs	[V]
T16												
		<b>4.3060.10.07</b>	<b>4.3060.40.07</b>	T5	1.750lm	2700K	24W	230V	symmetrisch	<55°C	UW, 3x1,5 qmm	T31
		<b>4.3060.11.07</b>	<b>4.3060.41.07</b>	T5	1.750lm	2700K	24W	230V	asymmetrisch	<55°C	UW, 3x1,5 qmm	T31
POW-LED, RADATION ANGLE 30° (MEDIUM)												
		<b>4.3060.10.11</b>	<b>4.3060.40.11</b>	18 POW-LED	2520 lm	6000K cold white	total 24 W	230V	30° medium	<55°C	UW, 3x1,5 qmm	V61
		<b>4.3060.10.12</b>	<b>4.3060.40.12</b>	18 POW-LED	1800 lm	3000K warm white	total 24 W	230V	30° medium	<55°C	UW, 3x1,5 qmm	
		<b>4.3060.10.13</b>	<b>4.3060.40.13</b>	18 POW-LED	1980 lm	4500K neutral white	total 24 W	230V	30° medium	<55°C	UW, 3x1,5 qmm	
		<b>4.3060.10.19</b>	<b>4.3060.40.19</b>	18 POW-LED		RGB	all on 23 W	CC 350 mA	30° medium	<55°C	UW, 8x0,5 qmm	
SMD-LED												
		<b>4.3060.10.01</b>	<b>4.3060.40.01</b>	SMD-LED cold white		6500K	5 W	230V	diffus	<40°C	UW, 3x1,5 qmm	
		<b>4.3060.10.02</b>	<b>4.3060.40.02</b>	SMD-LED warm white		3000K	5 W	230V	diffus	<40°C	UW, 3x1,5 qmm	
		<b>4.3060.10.03</b>	<b>4.3060.40.03</b>	SMD-LED neutral white		4000K	5 W	230V	diffus	<40°C	UW, 3x1,5 qmm	
INSTALLATION HOUSING												
		<b>4.3060.00.00</b>	<b>4.3060.00.00</b>	Installation housing out of 316L stainless steel with 2 terminating elements								
		<b>4.3060.01.00</b>		Extension housing out of 316L stainless steel with 2 junction elements								



RECESSED SPOTLIGHT  
4.3060



IP67

EXTERIOR

Power supplies    Technical details see from page 234.

Integrated

Integrated

Integrated

Integrated

Integrated

5.0635.09.50

RGB-Controller, max 2 spotlights

Integrated

Integrated

Integrated

NOTE



Glass surface temperature below 75° (Cool Contact)



CUSTOM  
MADE

Special designs and customer-specific equipment  
available on request



In public areas we recommend to use a non-slip  
glass. See accessories.

OPTIONS

Possible beam angle POW-LED



10°



30°



45°



90°



15x40°



RGB

SMD-LED RGB available



180°

Variant as surface-mounted spotlight available  
(tiltable from 180 °)